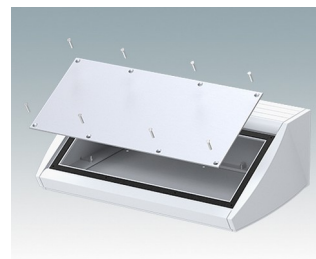
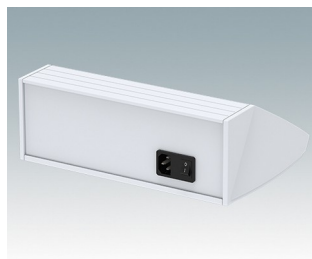
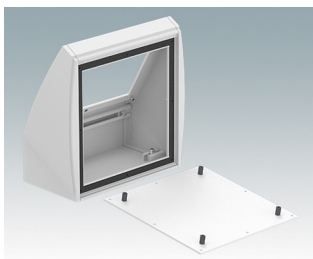
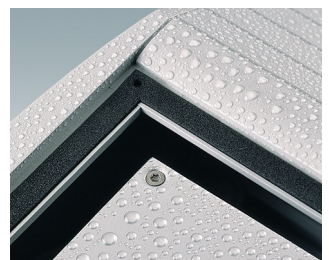
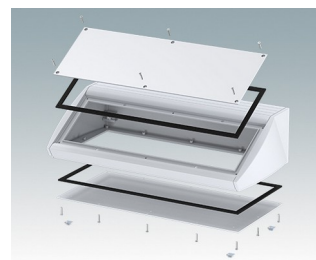


## Sloping front terminal enclosures

- Ergonomic aluminum instrument enclosures for desktop and wall mounted applications
- Very robust design in three standard sizes and three colors: traffic white, light gray and black
- Optional IP 54 models (VDE tested) with gaskets for the front and base panels
- Pre-assembled aluminum case body with flat rear panel for connectors, switches, power inlets etc.
- Stainless steel M3 Torx® T10 and MS M3 Pozidriv fixings supplied
- Four non-slip rubber feet included
- Accessory front panel is recessed for a membrane keypad
- Pre-punched PCB fixing points in base
- For IP 54 protection accessory PCB pillars are required
- Accessory wall mounting kit.

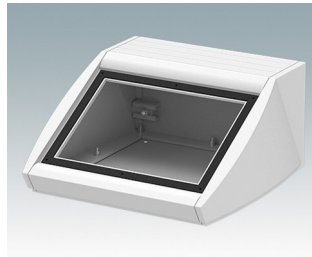
Order your own fully customized version [learn more here >>](#)



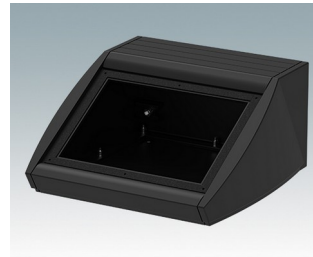
## Select Versions



**M5320105**  
UNIDESK M200 IP 54  
Aluminum  
Light gray RAL 7035  
7.87"x7.87"x4.02"  
IP 54



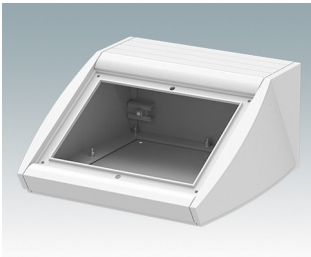
**M5320106**  
UNIDESK M200 IP 54  
Aluminum  
Traffic white RAL 9016  
7.87"x7.87"x4.02"  
IP 54



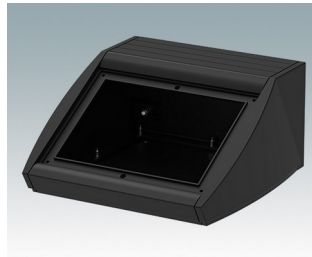
**M5320109**  
UNIDESK M200 IP 54  
Aluminum  
Black RAL 9005  
7.87"x7.87"x4.02"  
IP 54



**M5320115**  
UNIDESK M200  
Aluminum  
Light gray RAL 7035  
7.87"x7.87"x4.02"



**M5320116**  
UNIDESK M200  
Aluminum  
Traffic white RAL 9016  
7.87"x7.87"x4.02"



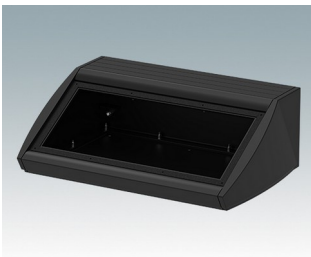
**M5320119**  
UNIDESK M200  
Aluminum  
Black RAL 9005  
7.87"x7.87"x4.02"



**M5330105**  
UNIDESK M300 IP 54  
Aluminum  
Light gray RAL 7035  
11.81"x7.87"x4.02"  
IP 54



**M5330106**  
UNIDESK M300 IP 54  
Aluminum  
Traffic white RAL 9016  
11.81"x7.87"x4.02"  
IP 54



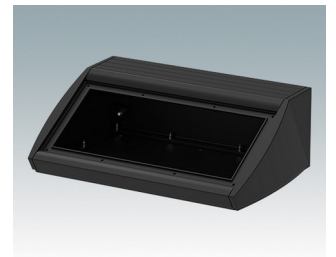
**M5330109**  
UNIDESK M300 IP 54  
Aluminum  
Black RAL 9005  
11.81"x7.87"x4.02"  
IP 54



**M5330115**  
UNIDESK M300  
Aluminum  
Light gray RAL 7035  
11.81"x7.87"x4.02"



**M5330116**  
UNIDESK M300  
Aluminum  
Traffic white RAL 9016  
11.81"x7.87"x4.02"



**M5330119**  
UNIDESK M300  
Aluminum  
Black RAL 9005  
11.81"x7.87"x4.02"



**M5340105**  
UNIDESK M400 IP 54  
Aluminum  
Light gray RAL 7035  
15.75"x7.87"x4.02"  
IP 54



**M5340106**  
UNIDESK M400 IP 54  
Aluminum  
Traffic white RAL 9016  
15.75"x7.87"x4.02"  
IP 54



**M5340109**  
UNIDESK M400 IP 54  
Aluminum  
Black RAL 9005  
15.75"x7.87"x4.02"  
IP 54



**M5340115**  
UNIDESK M400  
Aluminum  
Light gray RAL 7035  
15.75"x7.87"x4.02"

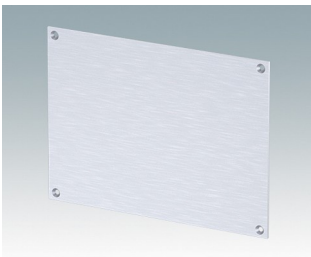


**M5340116**  
UNIDESK M400  
Aluminum  
Traffic white RAL 9016  
15.75"x7.87"x4.02"

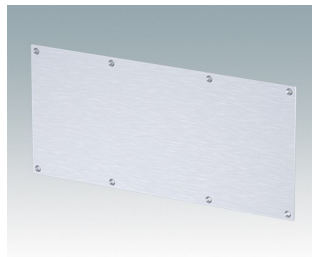


**M5340119**  
UNIDESK M400  
Aluminum  
Black RAL 9005  
15.75"x7.87"x4.02"

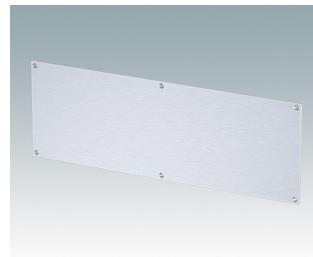
## Accessory



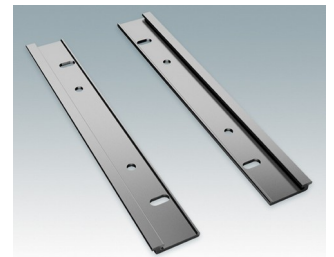
**M5301502**  
Front panel M200  
Aluminum  
Matt anodized  
6.69"x0.08"x4.84"



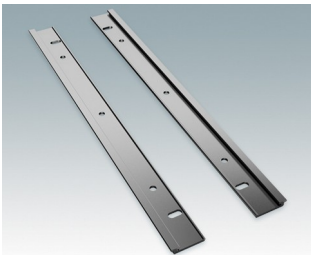
**M5301503**  
Front panel M300  
Aluminum  
Matt anodized  
10.63"x0.08"x4.84"



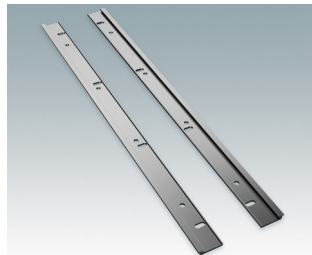
**M5301504**  
Front panel M400  
Aluminum  
Matt anodized  
14.57"x0.08"x4.84"



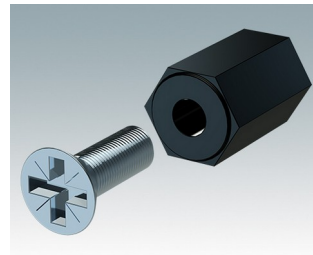
**M5302212**  
Wall mount kit M200  
Aluminum  
Matt anodized



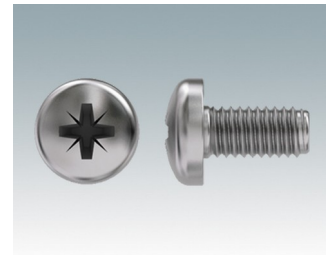
**M5302213**  
Wall mount kit M300  
Aluminum  
Matt anodized



**M5302214**  
Wall mount kit M400  
Aluminum  
Matt anodized



**M5600001**  
PCB mounting kit  
PA 6  
Black RAL 9005



**M5600010**  
PCB Fixing Screws, M3  
Steel  
Zinc coated  
0.24"

Subject to technical modification without notice. © OKW Enclosures Ltd