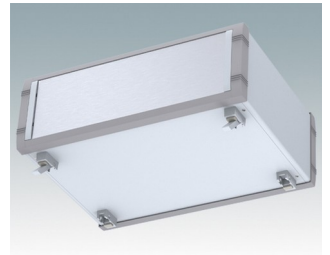
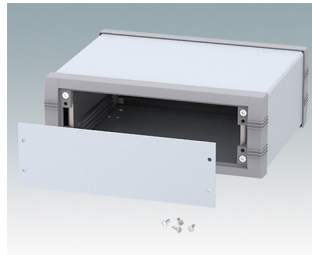
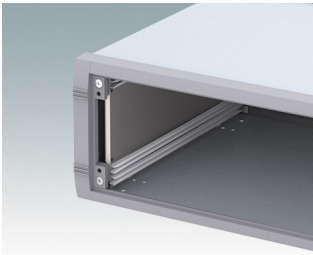
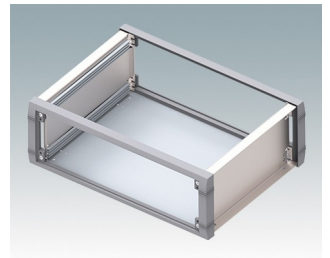
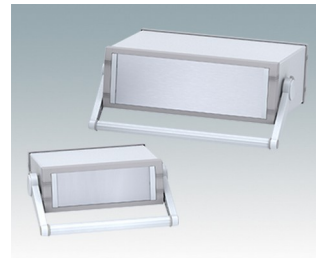
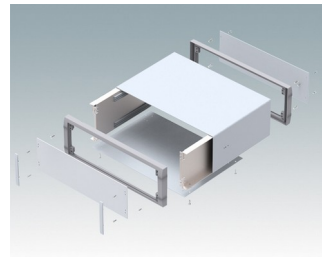
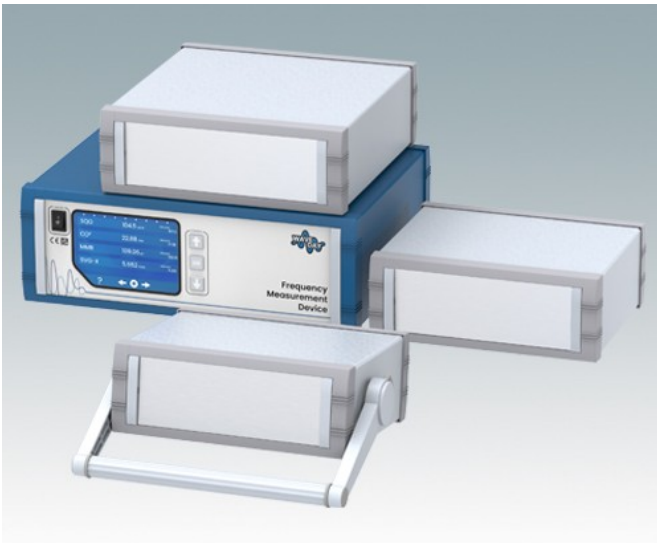


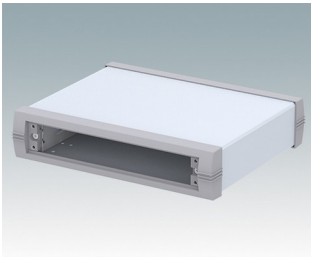
Stylish and versatile instrument enclosures

- Advanced aluminum instrument enclosures with or without a bail arm
- Robust and versatile design in six sizes
- Internal chassis with horizontal guide positions for slide-in PCBs
- Four snap-in polyamide PCB guides included
- Stylish die cast front and rear bezels assembled to the folded aluminum case body
- Removable rear panel - recessed for protection of connectors, switches etc.
- Recessed aluminum front panel (accessory)
- Four non-slip rubber feet included
- Accessory molded tilt feet available.

Order your own fully customized version [learn more here >>](#)



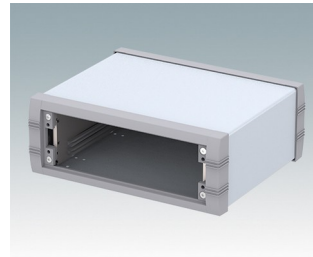
Select Versions



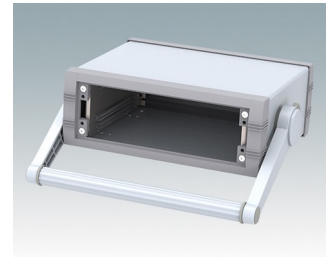
M5623015
UNIMET-PLUS 1
Aluminum
Light gray/window gray RAL
7035/7040
9.06"x7.60"x1.97"



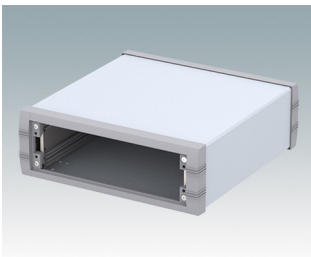
M5623035
UNIMET-PLUS 1H
Aluminum
Light gray/window gray RAL
7035/7040
9.06"x7.60"x1.97"



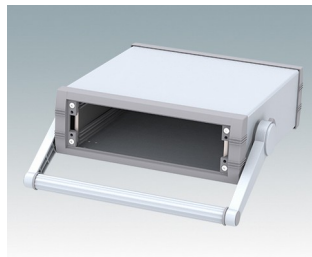
M5623115
UNIMET-PLUS 2
Aluminum
Light gray/window gray RAL
7035/7040
9.06"x7.60"x3.35"



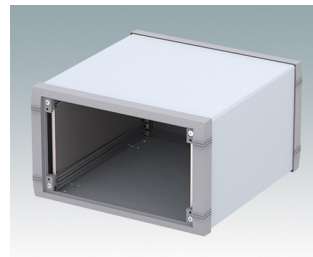
M5623135
UNIMET-PLUS 2H
Aluminum
Light gray/window gray RAL
7035/7040
9.06"x7.60"x3.35"



M5625115
UNIMET-PLUS 3
Aluminum
Light gray/window gray RAL
7035/7040
9.84"x10.35"x3.35"



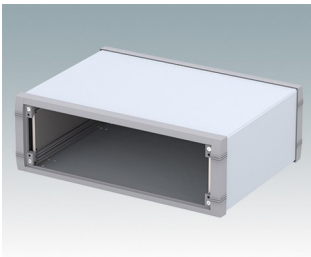
M5625135
UNIMET-PLUS 3H
Aluminum
Light gray/window gray RAL
7035/7040
9.84"x10.35"x3.35"



M5625315
UNIMET-PLUS 5
Aluminum
Light gray/window gray RAL
7035/7040
9.84"x10.35"x5.91"



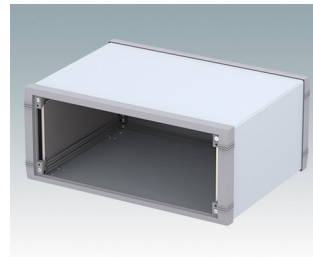
M5625335
UNIMET-PLUS 5H
Aluminum
Light gray/window gray RAL
7035/7040
9.84"x10.35"x5.91"



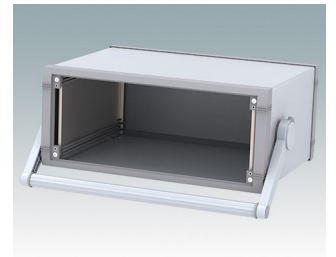
M5635215
UNIMET-PLUS 4
Aluminum
Light gray/window gray RAL
7035/7040
13.78"x10.35"x4.72"



M5635235
UNIMET-PLUS 4H
Aluminum
Light gray/window gray RAL
7035/7040
13.78"x10.35"x4.72"

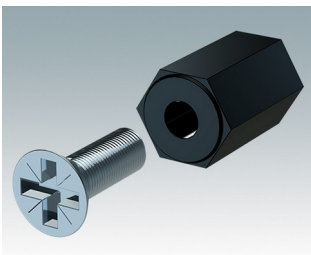


M5635315
UNIMET-PLUS 6
Aluminum
Light gray/window gray RAL
7035/7040
13.78"x10.35"x5.91"

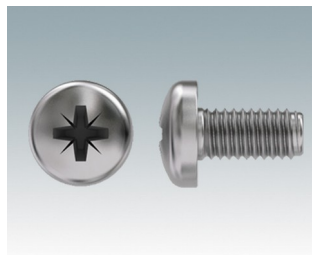


M5635335
UNIMET-PLUS 6H
Aluminum
Light gray/window gray RAL
7035/7040
13.78"x10.35"x5.91"

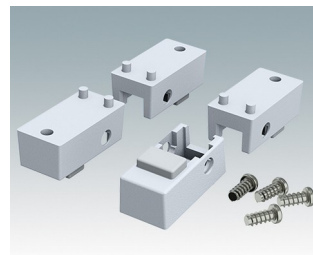
Accessory



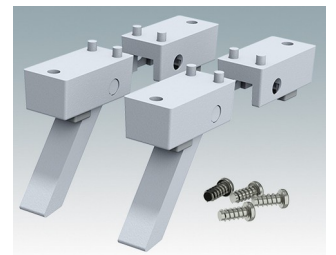
M5600001
PCB mounting kit
PA 6
Black RAL 9005



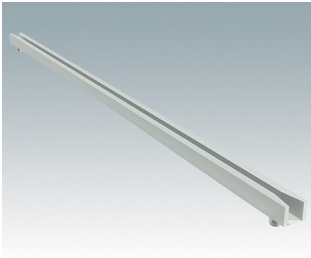
M5600010
PCB Fixing Screws, M3
Steel
Zinc coated
0.24"



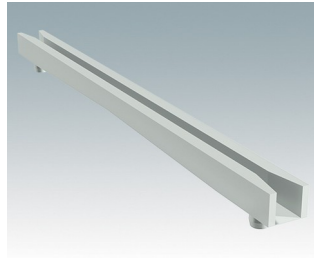
M5600015
Case Feet Kit 1
ABS (UL 94 HB)
Light gray RAL 7035
1.34"x0.67"x0.63"



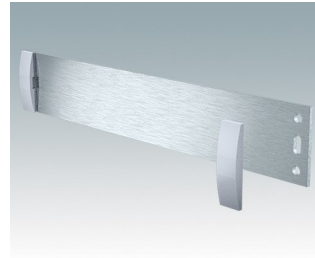
M5600045
Case Feet Kit 2
ABS (UL 94 HB)
Light gray RAL 7035
1.34"x0.67"x0.63"



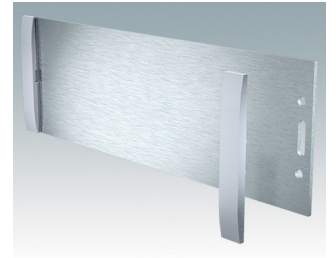
M5700202
PCB guide, 8.50"
PA 6/6 (UL 94 V-2)
White



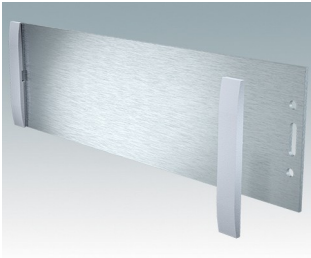
M5700203
PCB guide, 4.00"
PA 6/6 (UL 94 V-2)
White



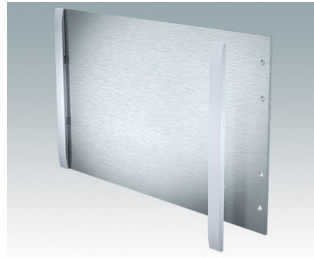
M5700607
Front panel kit (1/1H)
Aluminum
Matt anodized
7.85"x0.08"x1.32"



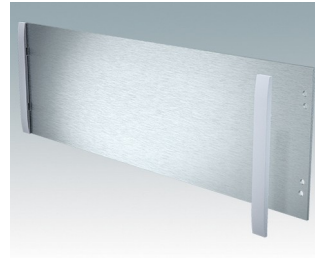
M5700608
Front panel kit (2/2H)
Aluminum
Matt anodized
7.85"x0.08"x2.56"



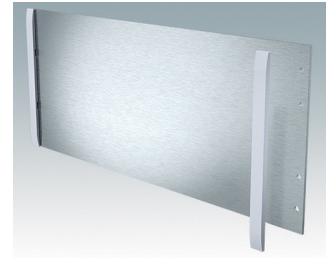
M5700613
Front panel kit (3/3H)
Aluminum
Matt anodized
8.64"x0.08"x2.56"



M5700616
Front panel kit (5/5H)
Aluminum
Matt anodized
8.64"x0.08"x5.12"



M5700620
Front panel kit (4/4H)
Aluminum
Matt anodized
12.58"x0.08"x3.94"



M5700621
Front panel kit (6/6H)
Aluminum
Matt anodized
12.58"x0.08"x5.12"

Subject to technical modification without notice. © OKW Enclosures Ltd