

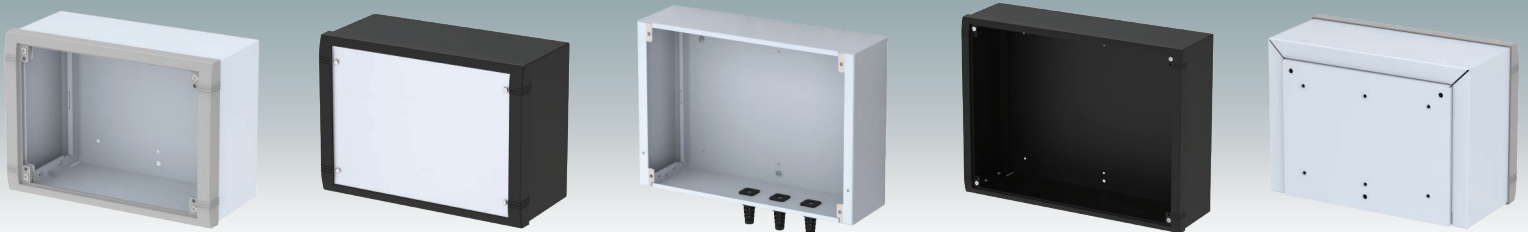
METcase™

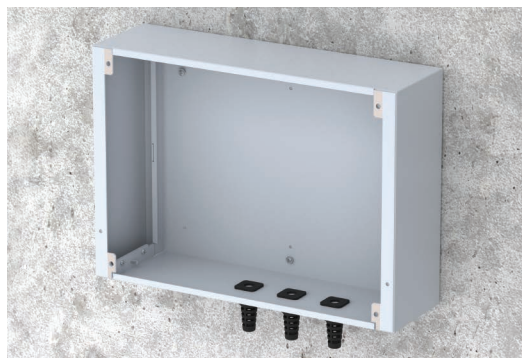
Electronic Enclosures



DATAMET

Wall-Mount Enclosures



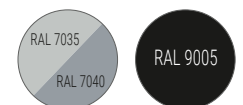


Versatile, easy-access wall-mount enclosures

DATAMET wall-mount enclosures are designed for indoor electronic equipment mounted on walls, machines or other flat surfaces. The modern three-part design provides full access to the electronics during installation and servicing. The L-shaped rear panel attaches to the wall and includes holes for fitting PCBs or the internal mounting plate kit. Cable glands and connectors can be mounted on the underside. The top cover fits over the rear panel and secures the diecast front bezel. The front panel (accessory) is attached to the diecast bezel using the screws provided. Order your own fully customized version today.

Standard colors

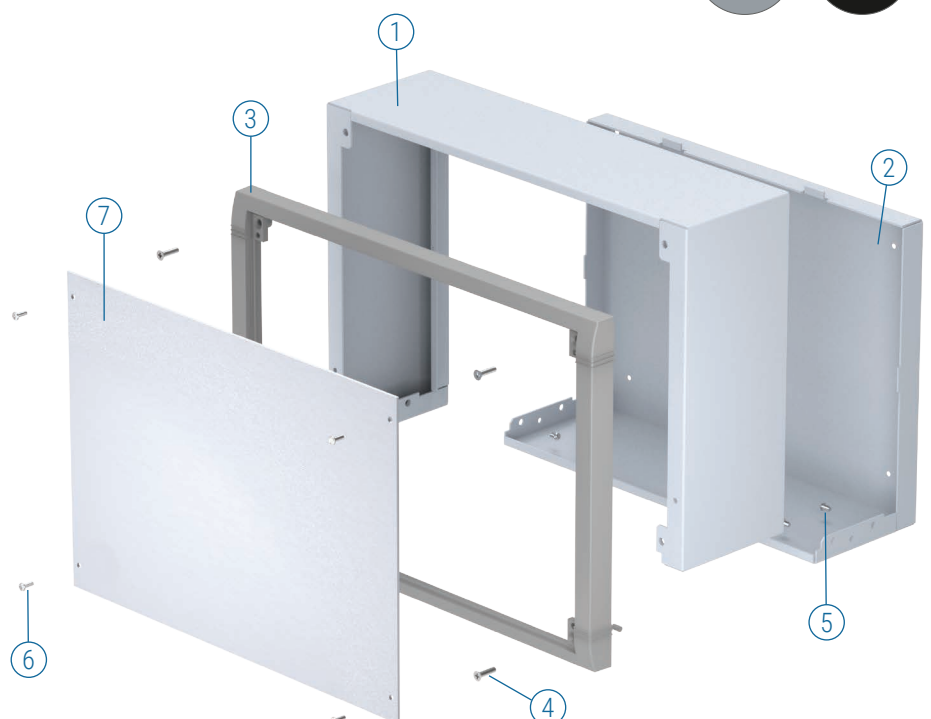
Light gray RAL 7035.
Window gray RAL 7040.
Black RAL 9005.



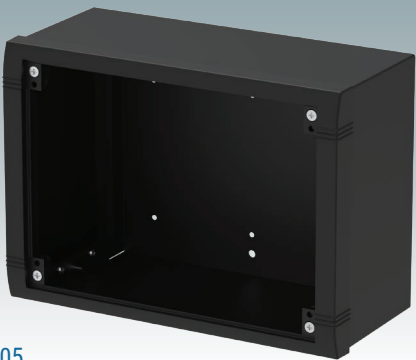
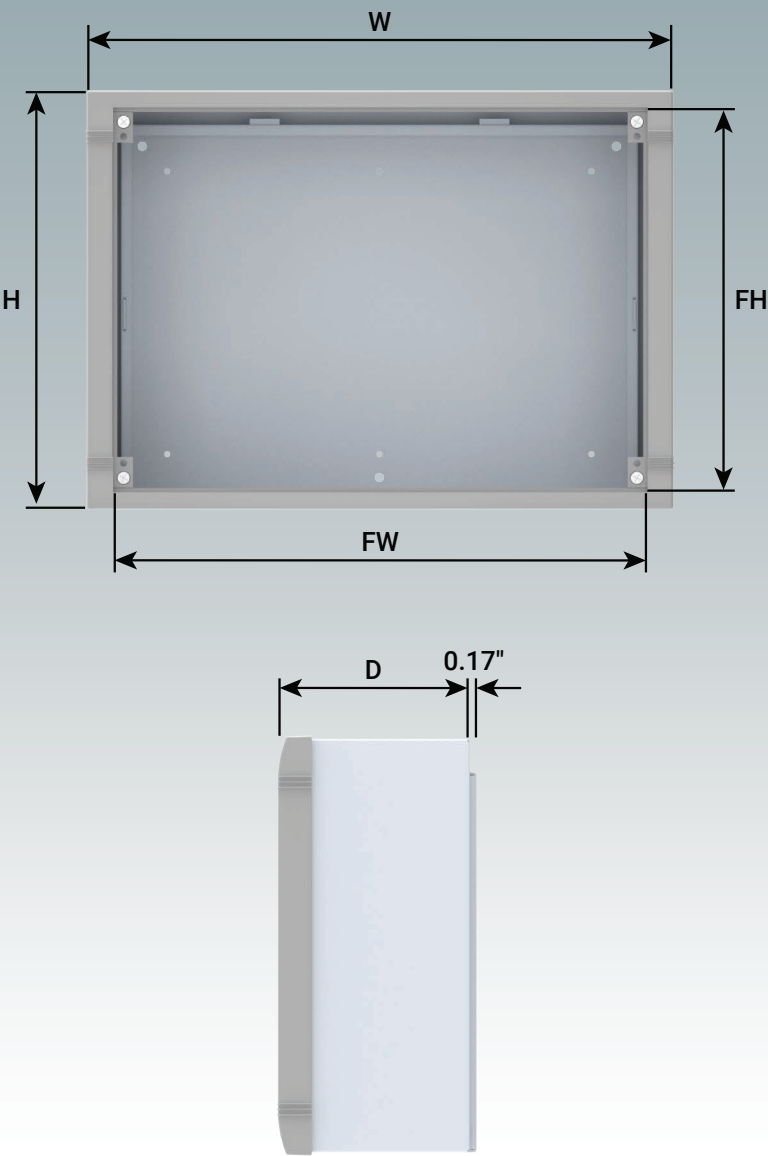
Supply

- ① Top cover
- ② Rear panel
- ③ Front bezel
- ④ M4 x 16 mm (x4)
- ⑤ M4 x 6 mm (x4)
- ⑥ M3 x 10 mm (x4)
- ⑦ *Front panel

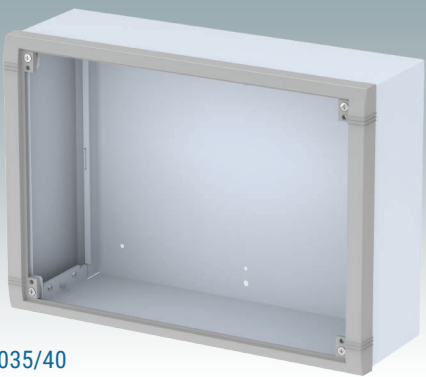
*accessories



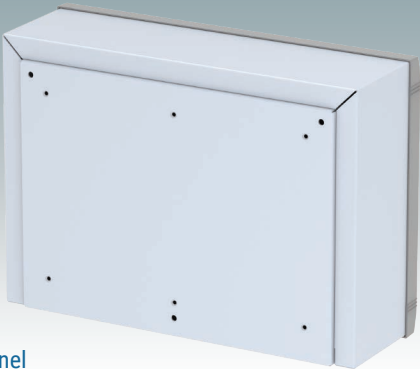
DATAMET



RAL 9005





RAL 7035/40



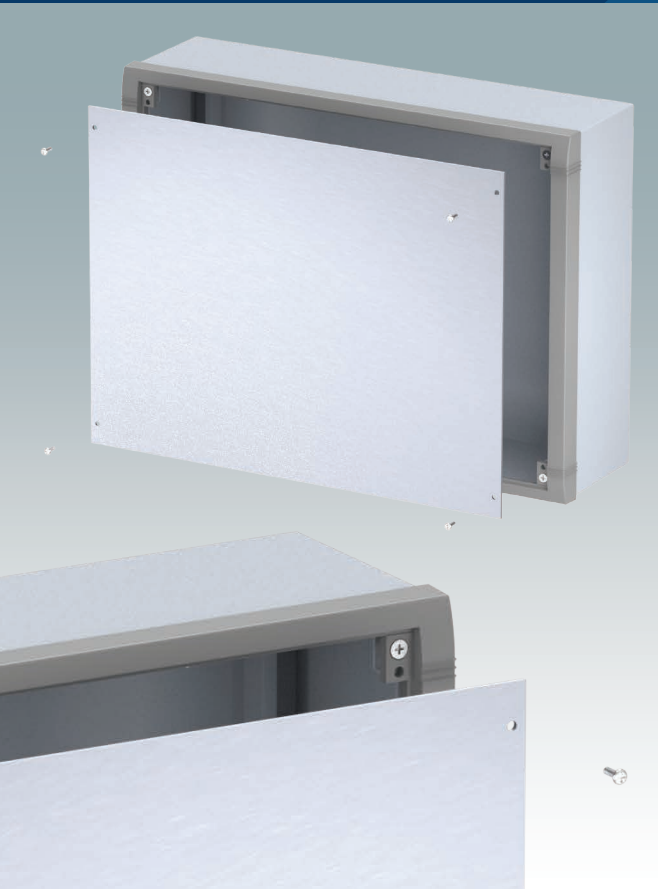
Rear panel

DATAMET

Part No.	Part No.	Version	W	H	D	FW	FH	PCB	PCB
RAL 9005 	RAL 7035/40 					Front Panel	Front Panel	Width (max.)	Depth (max.)
M 58 25 109	M 58 25 105	S	9.84"	7.08"	4.58"	8.66"	6.28"	6.89"	4.72"
M 58 35 109	M 58 35 105	M	13.78"	9.84"	4.58"	12.59"	9.03"	10.82"	7.48"
M 58 40 109	M 58 40 105	L	15.74"	11.81"	4.58"	14.56"	11.00"	12.79"	9.44"

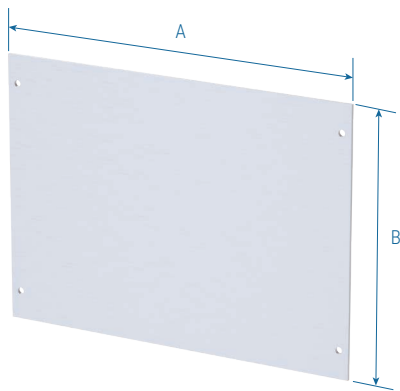
For full 2D drawings and 3D models please see our website.

For front panels and accessories see page 4.

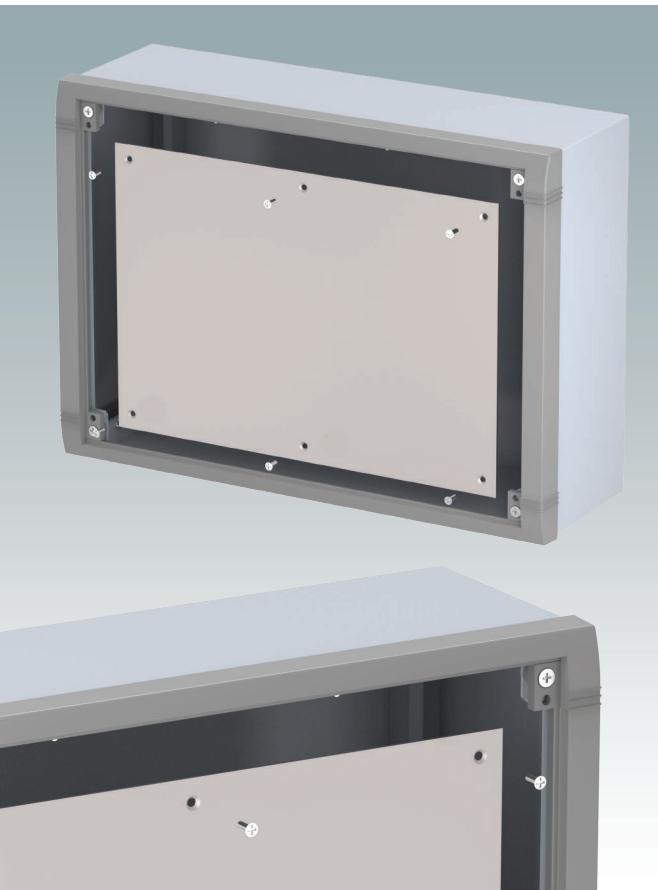


Front Panel

Supply:
Panel (2 mm matt anodized aluminum)



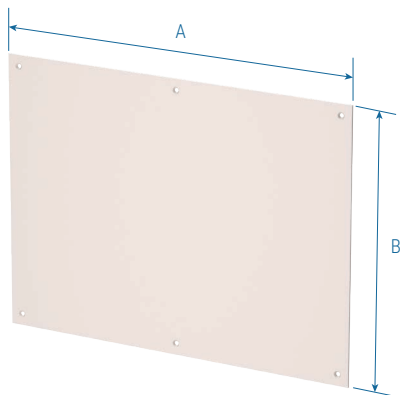
Part No.	Version	A	B
M 58 00 025	S	8.66"	6.28"
M 58 00 035	M	12.59"	9.03"
M 58 00 040	L	14.56"	11.00"



Mounting Plate Kit

The mounting plate is attached to the pre-punched holes in the enclosure's rear panel using the nylon pillars and screws supplied in the kit.

Supply:
Mounting plate (1.5 mm natural aluminum)
M3 x 10 mm threaded pillar (x6)
M3 x 6 mm fixing screw (x12)



Part No.	Version	A	B
M 58 04 125	S	6.89"	4.72"
M 58 04 135	M	10.82"	7.48"
M 58 04 140	L	12.79"	9.44"



Order your own customized version

We can supply the DATAMET enclosures fully customized to your individual technical specifications.

All external dimensions – height, width and depth – can be modified to ensure your PCB assemblies and equipment will fit exactly.

The enclosures and front panels can be machined with holes and cutouts for fitting displays, keypads, HMI touch panels, control buttons and connections.

Other services include adding inserts and screw bosses; custom colors and finishes; digital and silk-screen printing, and engraving.

Having a flexible manufacturing system allows us to offer competitive prices even for small quantities. Do not hesitate to ask us for a quotation.

Our sales team will be very happy to discuss your requirements and help you specify your DATAMET enclosures exactly as you need them.





METcase™

MANUFACTURER

Metcase Enclosures
A division of:
OKW Enclosures Ltd.
15 Brunel Way
Segensworth East
Fareham, Hampshire
PO15 5TX
United Kingdom

Telephone: +44 (0) 1489 583858
Email: sales@metcase.co.uk
Website: www.metcase.co.uk

© OKW Enclosures Ltd. All rights reserved
Catalogue Edition 1.1 – December 2025.
This catalog will be valid until 31/12/2027.
Subject to technical modifications without notice.
Typographical and other errors do not justify any
claim for damages.
Digital Version: 12/2025e

Presented by:



OKW Enclosures, Inc.
3000 Old Pond Road,
Bridgeville, PA 15017
Phone: (412) 220 9244
Toll Free: (800) 965 9872
Email: sales@metcaseusa.com

www.metcaseusa.com