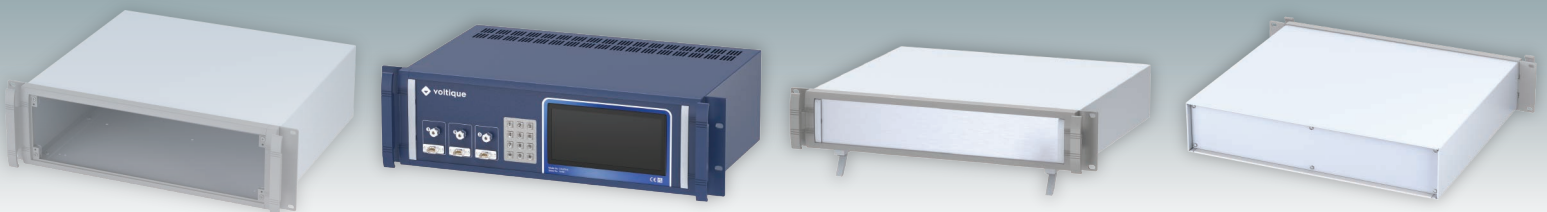


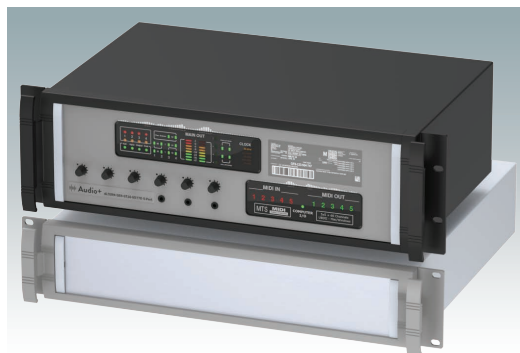
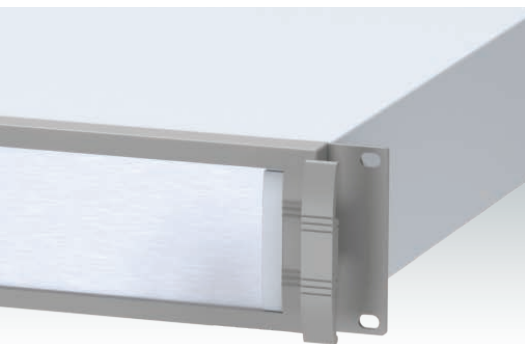
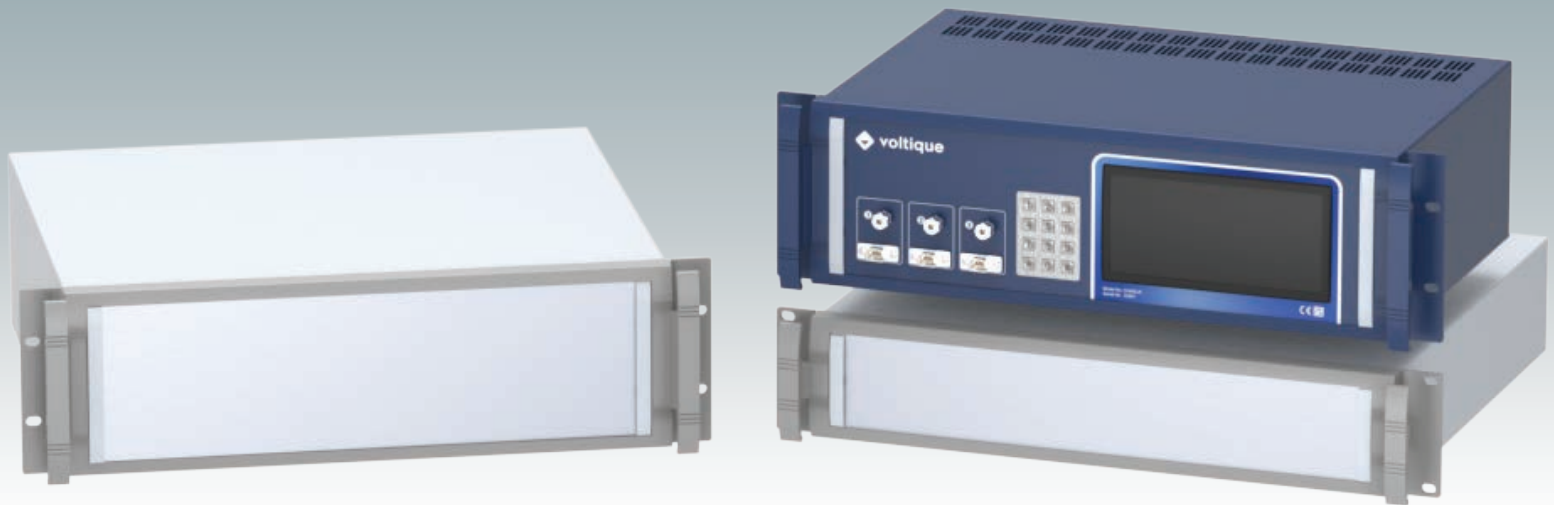


UNIMET 19"

Rack Mount Enclosures
DIN 41494 | IEC 60297-3



UNIMET 19"

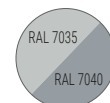


Modern 19" rack mount enclosures with removable front panels

Stylish range of aluminum 19" rack cases, compliant with DIN 41494 and IEC 60297-3 standards. Available in heights of 2U or 3U and two standard depths. Features an attractive diecast front bezel incorporating unique 'comfort handles' and rack mounting brackets. The robust case body includes a separate base and rear panel. The recessed front panel (accessory) can be removed while the enclosure remains fixed in the rack – ideal for servicing and equipment repairs. Accessories include PCB fixing pillars (mounted to the base) and molded feet kits for desktop use. Order your fully customized version today.

Standard colors

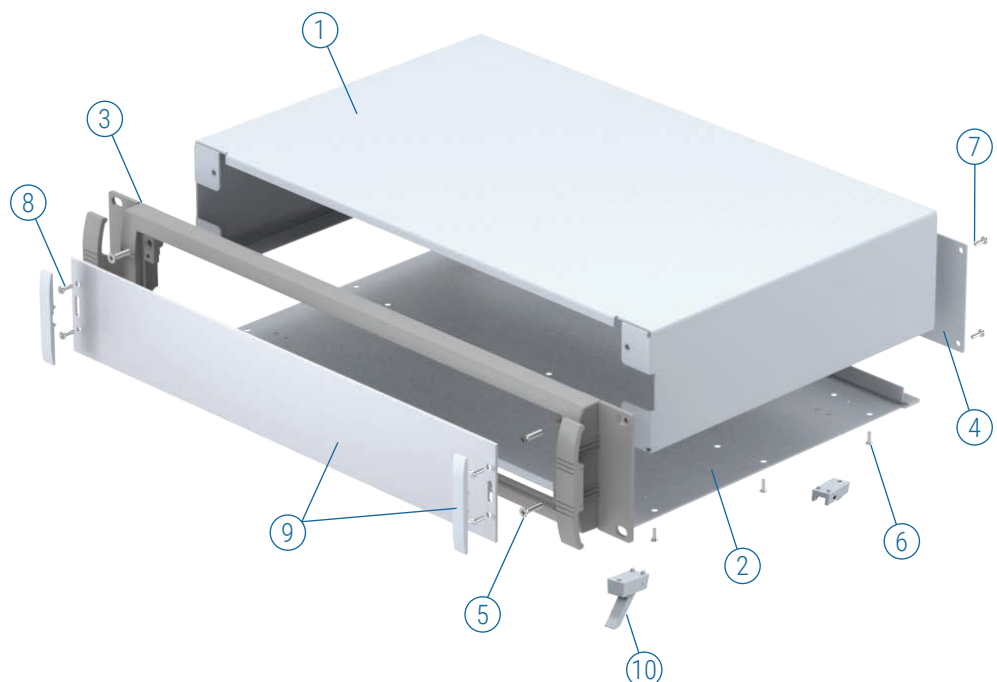
Light gray RAL 7035.
Window gray RAL 7040.



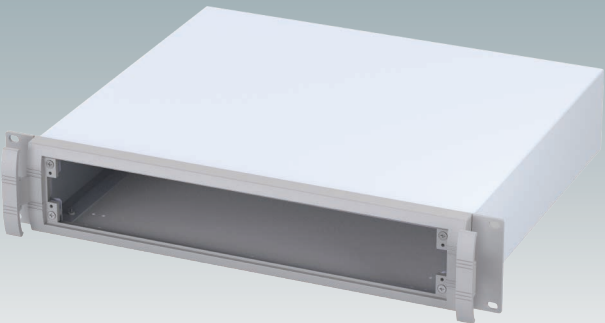
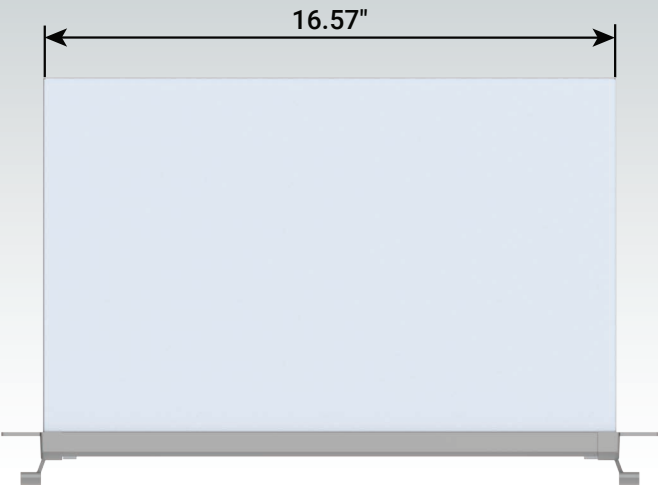
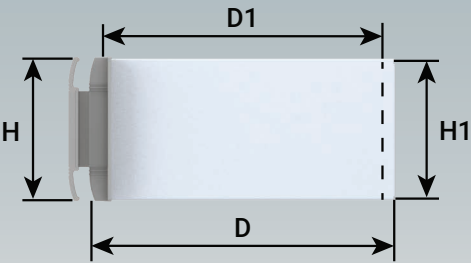
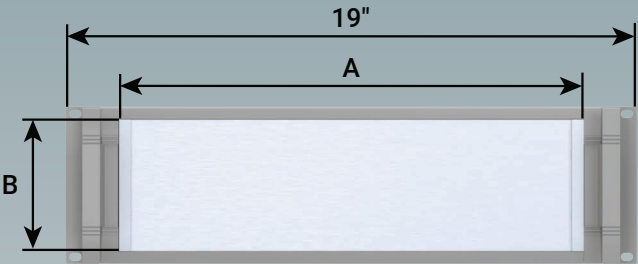
Supply

- ① Top cover
- ② Base panel
- ③ 19" front bezel
- ④ Rear panel
- ⑤ M4 x 16 mm (x4)
- ⑥ M3 x 8 mm (x6)
- ⑦ M3 x 8 mm (x6)
- ⑧ M3 x 8 mm (x4)
- ⑨ *Front panel kit
- ⑩ *ABS feet

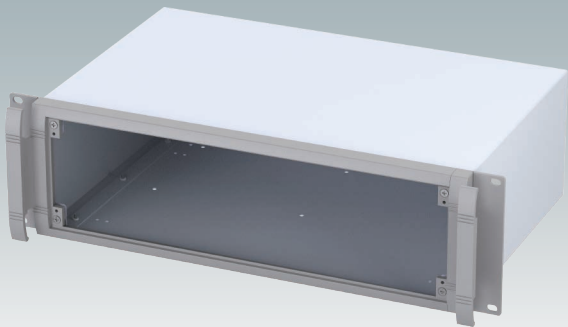
*accessories



UNIMET 19"



2U



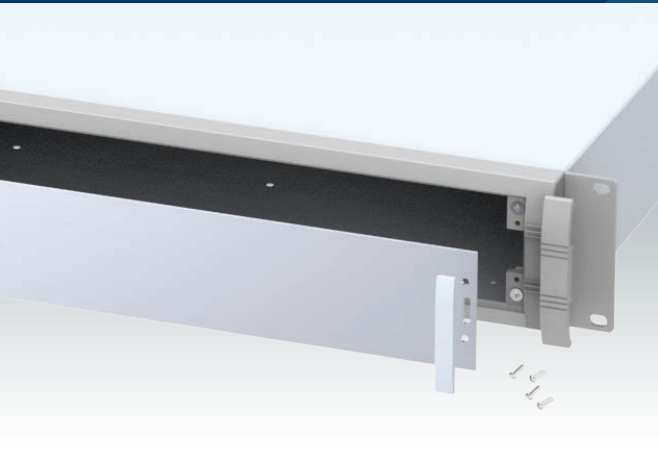
3U

UNIMET 19"

Part No.	Version	H	H1	D	D1	A Front Panel	B Front Panel
M 56 19 225	2U	3.47"	3.33"	11.02"	10.32"	15.45"	2.64"
M 56 19 235	2U	3.47"	3.33"	14.96"	14.26"	15.45"	2.64"
M 56 19 325	3U	5.22"	5.08"	11.02"	10.32"	15.45"	4.37"
M 56 19 335	3U	5.22"	5.08"	14.96"	14.26"	15.45"	4.37"

For full 2D drawings and 3D models please see our website.

For front panels and accessories see page 4.

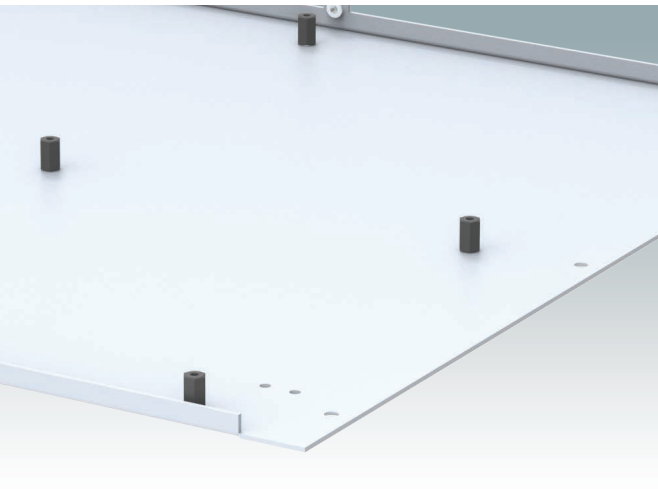


Front Panel Kits

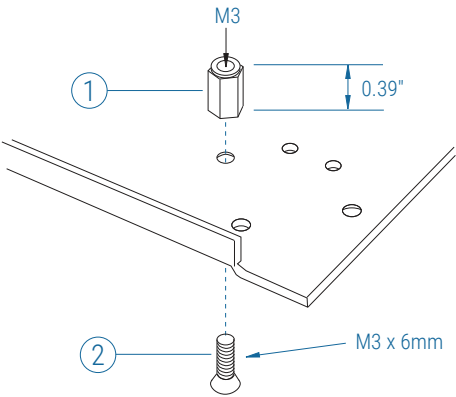
Supply:
Panel (2 mm matt anodized aluminum)
2 Trims (ABS, RAL 7035)



Part No.	Version	A	B
M 59 00 020	2U	15.45"	2.64"
M 59 00 030	3U	15.45"	4.37"



PCB Mounting Kit



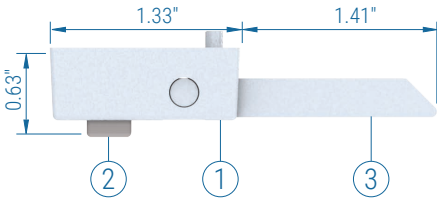
Part No.	Supply
M 56 00 001	①+② x 10



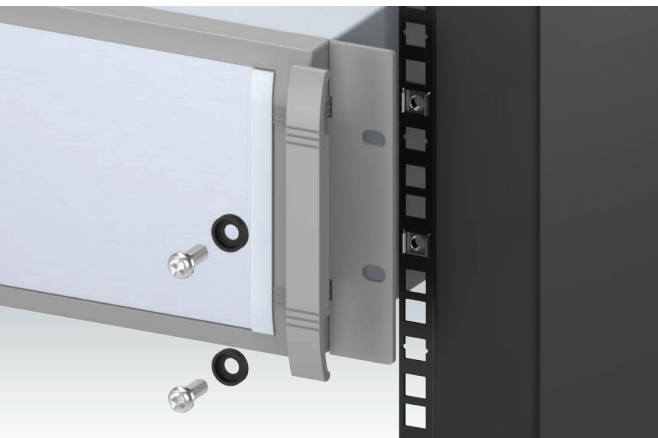
Feet Kits

These feet are attached to the pre-punched holes in the UNIMET 19" base panel using the included self-tapping screws.

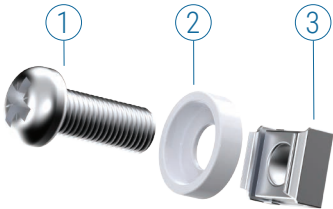
Material:
Feet and legs: ABS, light gray RAL 7035.
Non-slip pads: TPE, pebble gray RAL 7032.



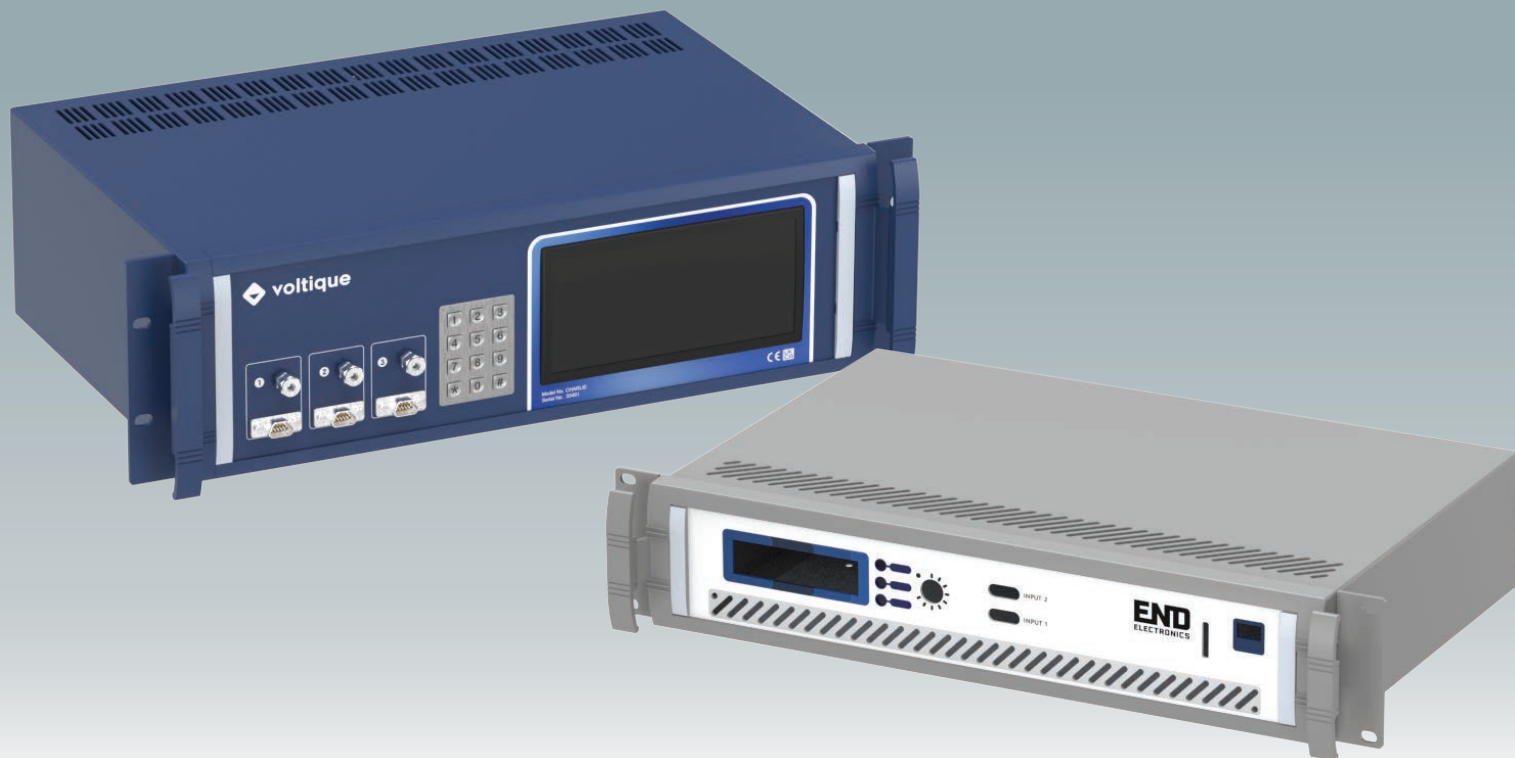
Part No.	Version	Supply
M 56 00 015	Without tilt legs	①+② x 4
M 56 00 045	With tilt legs	①+② x 4 +③ x 2



19" Mounting Kit



Part No.	Supply	Colour
M 60 00 035	①+②+③ x 4	● RAL 7035 ②
M 59 00 016	①+②+③ x 4	● RAL 9005 ②
M 59 00 018	①+②+③ x 4	● RAL 9005 ① ②



Order your own customized version

We can supply the UNIMET 19" enclosures fully customized to your individual technical specifications.

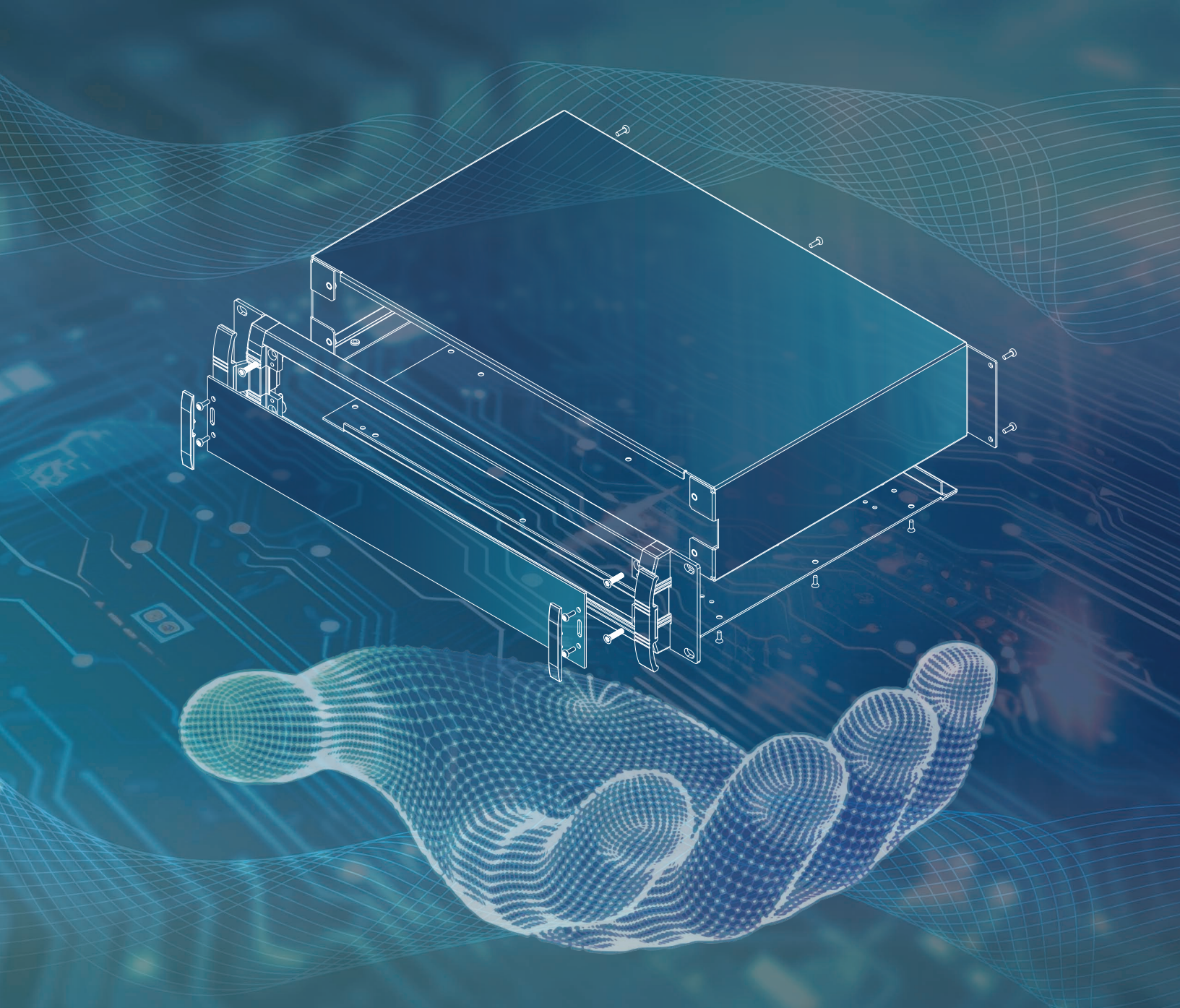
The external depth dimension can be modified to ensure your assemblies and equipment will fit exactly.

The enclosures and front panels can be machined with holes and cutouts for fitting displays, keypads, HMI touch panels, control buttons and connections.

Other services include adding inserts and screw bosses; custom colors and finishes; digital and silk-screen printing and engraving.

Having a flexible manufacturing system allows us to offer competitive prices even for small quantities. Do not hesitate to ask us for a quotation.

Our sales team will be very happy to discuss your requirements and help you specify your UNIMET 19" enclosures exactly as you need them.



METcase™

MANUFACTURER

Metcase Enclosures

A division of:
OKW Enclosures Ltd.
15 Brunel Way
Segensworth East
Fareham, Hampshire
PO15 5TX
United Kingdom

Telephone: +44 (0) 1489 583858
Email: sales@metcase.co.uk
Website: www.metcase.co.uk

© OKW Enclosures Ltd. All rights reserved
Catalogue Edition 1.2 – November 2025.
This catalog will be valid until 31/12/2027.
Subject to technical modifications without notice.
Typographical and other errors do not justify any
claim for damages.
Digital Version: 11/2025e

Presented by:



OKW Enclosures, Inc.

3000 Old Pond Road,
Bridgeville, PA 15017
Phone: (412) 220 9244
Toll Free: (800) 965 9872
Email: sales@metcaseusa.com

www.metcaseusa.com